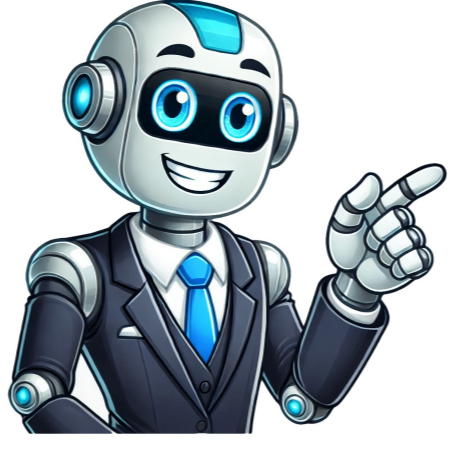


I'm not a bot

































How to activate Showtime Anytime on Apple TV, Roku, Xbox One, Android and iOS devices, and smart TVs. An active Showtime subscription or a subscription through an eligible provider. If you don't have an account, sign up here for a 30-day free trial. An account, whose login details you will use to activate the viewing device(s). To create your Showtime account, go to the sign up page. Click on the "Create new account" button on the page. Select your cable or satellite provider. If available, complete your profile to create the account. SEE ALSO: Showtime review: 5 factors to know before signing up. How to activate Showtime Anytime on a mobile device. Showtime Anytime activation is a simple process that should, ideally, not have any problems. However, from time to time, you might find that Showtime Anytime is not activating when you enter and submit the activation code. These are some of the common causes and their fixes: Your cable or satellite provider is not eligible if the TV service provider is not on the eligible list of providers, you will not be able to activate the service. To fix this, you need to purchase a subscription with an eligible provider. A bug or outdated app/channel if you can't activate Showtime on your device, the problem might be from the service's app or channel. Simply log out of your Showtime account, remove the app/channel, turn off the viewing device, download and reinstall the app/channel and then proceed to activate the service. Problem with the viewing device's provider devices that you use to watch Showtime Anytime are from third parties, and thus vulnerable to third-party compatibility problems. Therefore, if you are having problems activating your device, the problem might be from the device. Try switching to another device to see if the problem will resolve. SEE ALSO: Best TV channels for the elderly in 2025 Showtime Anytime is a leading entertainment service provider, which allows you to stream your content from several devices, anytime anywhere. The above are some of the streaming devices that are currently supported and how to activate the Showtime service on them. We have also offered you information on some of the common activation issues you might encounter and their fixes. If the problem persists, you can contact the Showtime Help Centre for more support. Related: Showtime offers two streaming services: Showtime Streaming Service and Showtime Anytime. Both services make it possible to view movies, live television, original series, and other content. Learn more about the details, requirements, and benefits of these services, which of the options best suit your streaming needs, and how you could start streaming Showtime programming. Showtime Anytime is what Showtime calls its streaming service if you subscribe to Showtime via cable or satellite television. Showtime Anytime is included in the cost of your cable/satellite subscription. Participating television providers include: U-verse, Comcast, DirecTV, Dish, Frontier, Mediacom, Optimum, Spectrum, Suddenlink, Verizon, Fios, WatchTV, Xfinity. You can find a complete list of participating providers on the Showtime Anytime website. Showtime Anytime features include the ability to download content to watch offline, create lists of your favorite content, shift from one device to another, picking up where you left off. You can use Showtime Anytime to stream content to most streaming devices, as well as mobile devices using iOS, Android, Amazon, and Meta Quest apps. Showtime Anytime is not available as a standalone streaming service. If you already have a Showtime subscription with a participating provider and want to start streaming Showtime Anytime, activate your compatible device. Add the Showtime Anytime channel or app to your streaming device, such as a Roku or Fire TV, or your mobile device. Links to all Showtime Anytime apps are available on the Showtime website. Sign in to Showtime Anytime on the app with your television provider username and password. An activation code will appear. Go to the Showtime Anytime activation page in a web browser and enter the code to begin watching showtime on your streaming device or mobile app. Alternatively, you can watch Showtime Anytime in your web browser by logging in with your television provider username and password on the Showtime Anytime page. Showtime's streaming service is simply called Showtime. If you don't have a cable/satellite TV package, you will sign up for Showtime, not Showtime Anytime. Showtime has a monthly fee (at the time of publication it's \$10.99/month with a 7-day free trial). The Showtime streaming service is available to anyone, provided you have a high-speed internet connection and a supported device. Currently, you can subscribe to the Showtime streaming service using the following companies/devices: Amazon, Android, Apple TV, Roku. You can also stream programming in your web browser via Showtime.com. Like Showtime Anytime, you can stream content or download programs to watch later offline. A subscription gains you get access to all of Showtime's movies, plus original shows. The fastest way to sign up for the Showtime Anytime app from the app bar on the home screen of your Apple TV. Activating Showtime Anytime Once you have the Showtime Anytime app downloaded, the next step is to activate it. This involves linking your Showtime account to your Apple TV. Here's how to do it: Launch the Showtime Anytime App: Open the Showtime Anytime app on your Apple TV. Select Sign In: On the main screen, you should see an option to log in. Click on the Sign In button. Choose Your Provider: A list of TV providers that support Showtime will be displayed. Look through this list for your provider. If your subscription is through a streaming service like Hulu or Amazon Prime, you can select that option as well. Get the Activation Code: After you select your provider, your Apple TV will generate an activation code. This code is essential for linking your Showtime account to the app. Use a Computer or Smartphone: Open a web browser on your computer or smartphone and navigate to the Showtime activation website. Typically, this URL is www.showtime.com/activate or a similar variant, but always refer to the instructions provided in the app for the accurate link. Enter the Activation Code: Once you are on the Showtime activation page, you will be prompted to enter the activation code displayed on your Apple TV. Type the code carefully. Log in to Your Account: After entering the activation code, you may need to log in to your Showtime account if prompted. Enter your credentials to gain access to your subscription. Complete the Activation: Click on the Activate button or similar option on the website. After a few moments, you should see a confirmation message. And just like that, your Showtime Anytime account will be activated on your Apple TV. Return to Apple TV: Switch back to your Apple TV. The Showtime Anytime app should refresh, and you'll see that you are now logged in. You can immediately start browsing and streaming content! Troubleshooting Common Issues While activating Showtime Anytime is usually a straightforward process, you might encounter some issues along the way. Here are a few common problems and how to solve them: Activation Code Issues: If the activation code doesn't seem to work, ensure that you've entered it correctly. Activation codes are case-sensitive and can expire after a short period. If expired, simply restart the app to get a new code. Provider Not Found: If your TV provider does not appear in the list, double-check that your subscription to Showtime is valid. You can also verify with your provider if they offer Showtime Anytime support. Network Issues: Ensure that your Apple TV is properly connected to the internet. You can test the connection through the settings on your device. If there are issues, you may need to reset your router. App Updates: If you experience playback or stability issues, check for any available app updates in the App Store. Keeping your app updated helps incorporate the latest features and improvements. Account Issues: If you're having trouble logging into your Showtime account, make sure you're using the correct username and password. If you can't remember them, you can reset your password through the Showtime website. Navigating the Showtime Anytime App Now that you've activated Showtime Anytime, let's explore some of the key features within the app to enhance your viewing experience: Home Screen: Upon logging in, the home screen displays featured content, including new releases, popular shows, and recommendations based on your viewing habits. Use this to find exciting content with ease. Search Functionality: If you're looking for something specific, utilize the search function. Search by title, genre, or even actors to find what you wish to watch. Browsing Categories: Showtime Anytime organizes its library into categories such as "Original Series," "Movies," "Documentaries," and "Comedy." Browsing these sections can help you discover new content. Watch Lists and Personalization: Take advantage of the watchlist feature by adding shows or movies you want to catch later. The app also learns from your viewing habits, making recommendations tailored to you. Offline Viewing: If you plan to travel or want to watch something later without internet access, don't forget to check which titles are available for offline download. Tap the download option near the content to save it directly to your device. Conclusion Activating Showtime Anytime on your Apple TV is a simple and rewarding process, granting you access to a trove of premium content at your fingertips. With the combination of impeccable shows, films, and documentaries, Showtime Anytime enriches the viewing experience for every entertainment enthusiast. By following the detailed steps provided in this article, you can ensure a smooth activation and start enjoying hours of high-quality programming. As you explore the vast library of Showtime, take the time to familiarize yourself with the app's features to enrich your experience further. Whether you are binge-watching a series or catching up on the latest movies, Showtime Anytime is sure to keep you entertained. Remember that your entertainment journey is just beginning. Enjoy the captivating storytelling and outstanding content that Showtime Anytime has to offer right on your Apple TV! TV and Home / Apple TV I tried logging into start the showtime channel on Apple TV and I put in the incorrect Apple ID multiple times and I am not locked out. I went to Iforgot.Apple.com and reset my password, but the showtime is still saying I need to go back to iforgot.Apple.com. please help. 55UM6910PUC, Posted on Jun 6, 2021 8:09 AM Reply Posted on Jun 6, 2021 8:19 AM If you subscribed to Showtime as Apple TV app Channel subscription inside the Apple TV app, then you will need to view its content in the Apple TV app. And you will need to sign in. These are generally not exchangeable types of subscriptions. They have different terms and condition, and different perks and limitations. Apple TV Channels FAQ: Services, pricing, availability, and everything else you need to know - Macworld Subscribe to Apple TV channels in the Apple TV app - Apple Support Page content loaded Jun 6, 2021 8:19 AM in response to AdamSpiegel930 If you subscribed to Showtime as Apple TV app Channel subscription inside the Apple TV app, then you will need to view its content in the Apple TV app. And you would be automatically signed in with the app for all subscribed channels. If you subscribed to Showtime outside the Apple TV app, then you will need to view its content in the separate Showtime app. And you will need to sign in. These are generally not exchangeable types of subscriptions. They have different terms and condition, and different perks and limitations. Apple TV Channels FAQ: Services, pricing, availability, and everything else you need to know - Macworld Subscribe to Apple TV channels in the Apple TV app - Apple Support This thread has been closed by the system or the community team. You may vote for any posts you find helpful, or search the community for additional answers. Logging to Showtime on Apple tv Activating Showtime Anytime on your Apple TV means linking your device with a code shown on your screen, but this process can sometimes be confusing. Some users have found that the activation code does not show up correctly on their TV, often because of display settings or problems with the HDMI cable. To finish activating, you'll need to choose your TV provider and sign in with your account. This will allow you to access all Showtime Anytime content. Before starting activation, make sure you meet these requirements: Your provider must participate in the Showtime program (check with your provider if you are unsure). You must have a Showtime subscription with your satellite or cable provider. You must set up a Showtime Anytime account before using the service on Apple TV. If you don't have one, visit the Showtime website, click on Create a new account, and choose your provider from the list if it appears. Cant See the Activation Code on Your TV? If the activation code is missing or cut off on your TV screen, try these steps: Change your TV's aspect ratio setting to see if the full screen appears. Make sure you're using an HDMI cable to connect your Apple TV to your television. Set your Apple TV resolution to Auto (On Apple TV, go to Settings > Audio/Video > TV Resolution > Select Auto). If possible, try connecting your Apple TV to another (preferably higher-resolution) LCD TV to see if the code appears. After making these adjustments, go to the Showtime website, log in to your account, and enter your activation code when prompted. How to Use Your iOS Device to Complete Activation If you prefer, you can complete the activation using your iOS device. Download the Showtime app from the App Store. Enter the required information to activate your Showtime account in the app. After activation, open Settings (tap the gear icon in the top left corner of the app). Under the Devices section, select Activate device. Then choose Activate Apple TV. Enter the activation code shown on your TV screen, wait about 5 seconds, and the activation should complete. You'll now have access to Showtime Anytime on your Apple TV. This is normal, as the service usually allows only one active connection at a time for security reasons. Let's face it, folks. Regular streaming services are cool and all, but sometimes you just need your fix of Dexter, Homeland, or that documentary about competitive cheese rolling (hey, no judgement!). That's where Showtime swoops in, like a knight in shining armor...except instead of a horse, it's riding a slow loris on a unicycle. Now, you might be thinking, "Sign me up for this whimsical streaming circus!" But hold your horses (or slow loris). Subscribing to Showtime on Apple TV can be a bit of a labyrinth, especially if you're new to the whole streaming rodeo. Fear not, fellow couch potato, for I, your trusty guide and (champion of cheese rolling documentaries), will walk you through the process. Step 1: Brace Yourself for Apple-ese First things first, you'll be navigating the wondrous world of Apple TV channels. Buckle up, because things can get a little...technical. Here's a cheat sheet to decipher some key terms: Apple TV Channels: Basically, a way to add extra channels to your regular Apple TV subscription, kind of like buying those fancy sprinkles to jazz up your grocery store ice cream. In-App Channels: Don't let the fancy name fool you. These are just additional channels you can subscribe to within the Apple TV app, like adding a chocolate chip cookie to your sprinkle-laden ice cream creation. Because...well, that's the best way to enjoy it! Side Note: If you already have a separate Showtime subscription (not through Apple TV), you can usually log in to the Showtime app on your Apple TV with your existing credentials. But for those shiny new subscribers, keep on movin'! Step 2: The Great Apple TV Channel Hunt Alright, it's Showtime (get it? Showtime). Here's how to find the elusive Showtime channel: Open the Apple TV app on your device (Apple TV, iPhone, iPad, etc.). Scroll down until you see "Channels." Here's where things get interesting. You might see "Showtime" listed directly under Channels. OR you might need to click "See All" and search for "Showtime" using the handy dandy search bar. It's like playing a game of hide-and-seek with your entertainment options! Pro Tip: If you're having trouble finding Showtime, you can also try searching for a specific show you know is on Showtime. Sometimes, that can lead you to the channel itself. Step 3: Unleash Your Inner Accountant (Just Kidding, Mostly) Now comes the moment of truth: the subscription price. Showtime on Apple TV channels usually has a free trial period, so you can test the waters before diving in. Just be sure to set a reminder to cancel before the trial ends if you decide it's not for you (because nobody wants surprise credit card charges, especially not when they could be used for...more sprinkles!). Once you're happy with your Showtime fix, you'll be charged the monthly subscription fee. Don't worry, it's not enough to make you sell your prized cheese rolling memorabilia (hopefully you don't have any). Step 4: Showtime! (Finally!) Congratulations! You've successfully subscribed to Showtime on Apple TV. Now you can binge all those Dexter seasons, Homeland episodes, and yes, even that cheese rolling documentary (we won't judge). Settle in, grab your snacks (because what's streaming without snacks?), and get ready to be entertained. TV and Home / Apple TV Page content loaded Nov 4, 2021 8:32 AM in response to drokrome Showtime through the Apple TV app and Showtime through the Showtime app require different subscriptions that are not exchangeable. These subscriptions have different terms and conditions, different perks and limitations. Services through the Apple TV app are designated as Channel subscriptions. Subscribe to Apple TV channels in the Apple TV app - Apple Support Apple TV Channels FAQ: Services, pricing, availability, and everything else you need to know - Macworld This thread has been closed by the system or the community team. You may vote for any posts you find helpful, or search the community for additional answers. Showtime through Apple TV app Page content loaded Jan 1, 2017 9:36 AM in response to Le5lee Your question would be better answered by Showtime support as this is not an Apple issue but a Showtime issue. I can tell you that what "should" happen is that after you log in to the Showtime activate website and log in with your username and password you should be given a "Activate" section to enter the activate code shown on the Apple TV. If this is not happening it is on Showtime's side of things not Apple TV. One solution might be to delete the Showtime app from your Apple TV and then re-load it and try again. Good Luck! Jan 1, 2017 10:02 AM in response to Mobile Blues Hi All, It appears that Charter/Spectrum subscribers are out of luck due to some crazy contract issue? So Spectrum, which was formerly called Charter...re-named itself and also purchased Time Warner in the last year or so. If you were an existing Charter customer you now see Charter/Spectrum when you log into your account (like "HBO Go" or "Showtime Anytime"). You can access your content via Apple mobile devices such as iPhone or iPad. BUT NOT AppleTV!!!! However, the customers that are Time Warner/Spectrum subscribers CAN access their subscribed content via AppleTV. Seems like the Charter consumers are out of luck in this merger and this strange inconsistency which is exclusionary for a specific Apple device...I wonder if my local and federal representatives are aware of this strange contract before approving the merger? Mergers should be advantageous to the consumer...I am now considering my options, which are to unsubscribe my premium channels (HBO/Showtime) from Charter and purchase them outside the cable company. That would mean we could use the "HBO Now" and "Showtime" apps via Apple TV. Will post here and on other blog sites, forums what is discovered. Le5lee Jan 7, 2017 8:37 PM in response to Le5lee I have been trying to login for an hour. I was stuck in a loop. It is an apple tv issue since I can see the apple tv activated in my account on my phone app and my MacBook. I finally decided to reboot apple tv (unplug and replug) and tried one more time to activate and this time it worked so when in doubt, reboot Feb 25, 2017 4:47 PM in response to Le5lee This is exactly what we are encountering and charter customer service has zero answers. If time warner and charter are the same company, why is Apple TV being excluded from people that only charter can reach? I'm ready to switch back to sling! At least I can access my apps for high definition on demand there! Sep 1, 2017 4:31 PM in response to Le5lee I guess we're crewed with Charter. I just switched from DirecTV which had no problem. So the only obvious solution, for now anyway, is to mirror to the Apple TV. I only watch Homeland on Showtime anyway! Aug 6, 2017 11:07 AM in response to Le5lee Any luck activating apple tv. I have the same problem and can not find a solution. Feb 18, 2023 2:54 PM in response to binsynapse Want to dive into the gritty drama, cutting-edge comedy, and captivating documentaries that Showtime offers, all from the comfort of your Apple TV? You've come to the right place. The process is straightforward and offers several options, ensuring you don't miss a single episode of your favorite shows. You can watch Showtime on Apple TV by subscribing through the Showtime app, subscribing through Apple TV Channels, or utilizing your existing cable or satellite provider login credentials through the Showtime app. Lets dissect each method to get you binge-watching in no time. Unleashing Showtime on your Apple TV: Three Prime Paths Accessing Showtime on your Apple TV boils down to these three key strategies. Each has its advantages, so lets break them down. Option 1: The Standalone Showtime App This is perhaps the most direct route. Download the Showtime App: Head to the App Store on your Apple TV and search for Showtime. Download and install the official app. Subscription Time: Open the app. You'll likely be greeted with options to Start Your Free Trial or Subscribe Now. Follow the on-screen prompts to create an account and subscribe. Payment will be handled through your Apple ID. Dive In! Once your subscription is active, you can browse the Showtime library and start watching. The Appeal: This offers a dedicated Showtime experience, often with exclusive content or features. Option 2: Apple TV Channels: Showtime as an Add-On Think of Apple TV Channels as a streamlined, centralized hub for various streaming services. Navigate to the Apple TV App: On your Apple TV, open the Apple TV app (not the Apple TV+ app; its important to distinguish!). Explore Channels: Look for the Channels section (it might be under Watch Now or a similar tab). Find Showtime: Scroll through the available channels until you find Showtime. Subscribe Through Apple: Select Showtime and follow the on-screen instructions to subscribe. Again, payment is managed via your Apple ID. Simplified Viewing: Once subscribed, Showtime content will be integrated directly into the Apple TV app alongside content from other channels and services. This provides a seamless, unified viewing experience. The Appeal: Simplicity and integration are key here. All your streaming content lives within a single app. Option 3: Leveraging Your Existing Cable/Satellite Subscription Many cable and satellite providers offer Showtime as part of their premium channel packages. Download the Showtime App: Just like in Option 1, download the Showtime app from the App Store on your Apple TV. Authentication is Key: Open the Showtime app. Look for an option like Sign In with TV Provider or something similar. Select Your Provider: A list of cable and satellite providers will appear. Choose yours. The Second Screen Tango: You'll typically be redirected to a website on your computer or mobile device, where you'd need to log in with your cable/satellite provider credentials. This verifies that you're a legitimate Showtime subscriber through them. Back to Apple TV: After successful authentication on your computer or mobile device, the Showtime app on your Apple TV should automatically recognize your subscription and unlock the content. The Appeal: Avoids an additional subscription cost if you already pay for Showtime through your cable or satellite provider. Troubleshooting Common Showtime on Apple TV Issues While the process is generally smooth, hiccups can occur. Heres how to address some common problems: App Not Working: Ensure the Showtime app is updated to the latest version. Try restarting your Apple TV. If that fails, delete and reinstall the app. Subscription Issues: Double-check your subscription status in your Apple ID settings or through your cable/satellite providers website. Login Problems: Verify your login credentials carefully. Reset your password if necessary. Streaming Quality: Check your internet connection. A wired connection is often more stable than Wi-Fi. Adjust the streaming quality settings within the Showtime app if available. Content Not Available: Some content might be restricted based on your region or subscription level. Maximizing Your Showtime Viewing Experience on Apple TV Explore the Interface: Familiarize yourself with the Showtime app or Apple TV Channels interface. Discover how to browse, search, and create watchlists. Customize Settings: Adjust playback settings, subtitles, and audio options to suit your preferences. Utilize Siri: Use Siri voice commands to quickly launch the Showtime app, search for specific shows, or control playback. Stay Updated: Keep your Apple TV software and the Showtime app updated for optimal performance and access to the latest features. Share with Family Sharing: If you subscribe through Apple TV Channels, your subscription may be shareable with other members of your Family Sharing group. Showtime on Apple TV: Frequently Asked Questions (FAQs) Here are some common questions about watching Showtime on your Apple TV. 1. Does Showtime offer a free trial on Apple TV? Yes, in most cases, Showtime offers a free trial to new subscribers, whether you sign up through the standalone Showtime app or via Apple TV Channels. The length of the trial can vary, so be sure to check the specific terms when you subscribe. 2. Can I watch Showtime live on Apple TV? Yes, you can watch Showtime live through the Showtime app or the Apple TV Channels integration, depending on the specific Showtime channels included in your subscription. The exact channels available may vary based on your region and subscription type. 3. Is Showtime included with Apple TV+? No, Showtime is not included with Apple TV+. Apple TV+ is a separate streaming service that focuses on original content produced by Apple. You need to subscribe to Showtime separately, either through the Showtime app, Apple TV Channels, or your cable/satellite provider. 4. How much does a Showtime subscription cost on Apple TV? The cost of a Showtime subscription can vary depending on how you subscribe (standalone app or Apple TV Channels) and any promotional offers that may be available. Check the Showtime app or the Apple TV Channels section within the Apple TV app for the most up-to-date pricing information. 5. Can I cancel my Showtime subscription through Apple TV? Yes, if you subscribed to Showtime through Apple TV Channels, you can cancel your subscription through your Apple ID settings on your Apple TV or any other Apple device. Go to Settings > Accounts > Manage Subscriptions. 6. Can I use my Showtime Anytime login on the Showtime app or Apple TV? Showtime Anytime was a previous service that allowed users to stream Showtime content using their cable provider credentials. Showtime has been phasing out Showtime Anytime and directing users to the main Showtime app. In most cases, using your cable provider credentials on the regular Showtime app will achieve the same result. 7. What happens if I forget my Showtime password? If you subscribed through the Showtime app directly, you can reset your password through the Showtime app or website. If you subscribed through Apple TV Channels, you'll manage your password through your Apple ID. If you authenticated using your cable/satellite provider, you'll need to reset your password through their website. 8. Is Showtime content available in 4K on Apple TV? Showtime content is generally available in high definition (HD) on Apple TV. However, the availability of 4K content may vary depending on the specific show, movie, and your subscription plan. Check the video quality settings within the Showtime app. 9. Can I download Showtime content for offline viewing on Apple TV? The ability to download Showtime content for offline viewing depends on the specific app and your subscription. Typically, the standalone Showtime app allows downloading content for offline viewing on mobile devices, but not directly on Apple TV. If you subscribe through Apple TV Channels, download capabilities may be limited. 10. Does Apple TV support Dolby Atmos audio for Showtime content? Apple TV supports Dolby Atmos audio, but whether you experience it while watching Showtime depends on the specific content, your audio setup, and your Showtime subscription. Ensure your Apple TV and audio equipment are compatible with Dolby Atmos. 11. Why is the Showtime app buffering on my Apple TV? Buffering issues can be caused by a variety of factors, including a slow internet connection, a problem with the Showtime servers, or an issue with your Apple TV device. Try restarting your Apple TV, checking your internet speed, and ensuring the Showtime app is up to date. 12. Can I use AirPlay to stream Showtime from my iPhone or iPad to my Apple TV? Yes, you can use AirPlay to stream Showtime content from your iPhone or iPad to your Apple TV. Simply select the Showtime app on your iPhone or iPad, and then select your Apple TV as the AirPlay destination. This is a good workaround if youre experiencing issues with the Showtime app directly on your Apple TV. By understanding these options and troubleshooting tips, you'll be well-equipped to enjoy the best that Showtime has to offer on your Apple TV. Happy viewing!

How to add showtime to apple tv. Showtime apple tv. How to use showtime anytime with apple tv. Watch showtime on apple tv.

