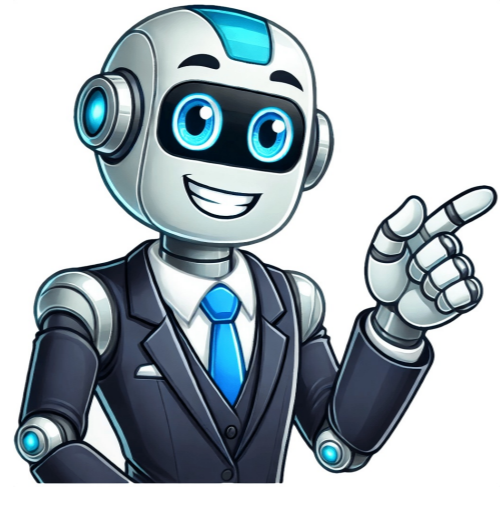


I'm not a bot



Pance exam passing score

Given article text here We store your email and cart data to send reminders - please don't reply. If you have questions about your iCME4Life account, email sarah@cme4life.com For PA National Certification Examination (PANCE) issues, email kara@cme4life.com After completing your studies, pass the PANCE exam to practice. We're here to help with any concerns, like average scores or required passing marks. We'll review some common FAQs about the PANCE in this post. Let's get started! Studying for the 2025 PANCE? Here's what you need to know about the new content blueprint! The PANCE is scored by experts who determine the required skills and knowledge for a good clinician. The exam uses the Angoff method, where experts evaluate test questions and set a "cut score" threshold. You'll need to exceed this score to pass (minimum 200, maximum 800). The PANCE also provides subscores for each body system. This helps you identify your strengths and weaknesses. Note that different tests have varying question difficulties and forms. In 2023, the average PANCE score was 455, and the passing rate was 89%. This means many test-takers do well, regardless of their schooling background. The passing rate has decreased slightly over five years. To prepare for the exam, here are some tips: * Study thoroughly to be well-prepared * Create a study plan For yourself in weeks leading up to exam devote couple hours each day uninterrupted study time. This way ensure have enough time cover all topics on PANCE. Can break up study days into specific body systems keep things organized. Important note PANCE will have more questions certain body systems others. Good idea spend extra time those areas since be tested more frequently during exam. Find blueprint PANCE topics here. Many PANCE studying resources available take advantage them! Blueprint PA excellent resource tools confidence well-prepared exam. Recommend taking practice tests offered Blueprint get feel how PANCE will. Benefit rationale provided each question see why right answer correct incorrect answers not. Helpful see areas need spend time on struggling remember key topics during prep download FREE study sheet mnemonics instructors use Live PANCE Review Course! Everyone nervous taking tests PANCE except you manage anxiety test come. Meditation breathing exercises great tool help. Find nerves getting exam take break follow test center rules most places allow breaks use restroom walk drink snack calm nerves. Positive self talk key test taking remember got this spent last two years preparing exam studied hard take deep breath remember capable normal feel pressure becoming PA PANCE resources Blueprint confidence First, I will explain what PANCE stands for and its significance in becoming a certified physician assistant. The exam assesses students' basic medical and surgical knowledge through multiple-choice questions. It's administered by the National Commission on Certification of Physician Assistants (NCCPA) to evaluate students who have completed accredited PA programs. The test is standardized, ensuring that all examinees take it under identical conditions. This standardization is achieved through the Automated Test Assembly (ATA) process. There are different test forms, but they all share similar characteristics in terms of difficulty and completion time. To guarantee the items' relevance, NCCPA reviews them beforehand, replacing outdated ones with new ones. Standardization is crucial because it guarantees that scores accurately reflect examinees' actual performance as a PA. PANCE scores range from 200 to 800, with a passing score of 350. Unlike other exams like the MCAT, PANCE doesn't use percentiles for scoring. The test is pass or fail based on achieving this minimum score. To achieve high scores, it's essential to understand that the PANCE uses Scale Scores instead of a straightforward point system. This means that each item's worth varies according to its difficulty and form. However, NCCPA statistically adjusts raw scores to ensure individuals with similar abilities receive comparable scores regardless of test forms or items answered. Historically, around 93% to 95% of first-time test-takers have passed the PANCE exam. While specific data is not provided for a particular year, it's clear that passing rates remain relatively high. To better comprehend PANCE scoring and increase your chances of success, consider utilizing Lecturio's preparation resources. The development of standardized tests like the PANCE requires careful consideration to ensure validity and generalizability. The NCCPA uses a combination of standardization methods, including using scores from previous test-takers and content guides, to establish a benchmark for the exam. A panel of PA experts reviews each question to determine the minimum competency required, and their ratings are aggregated to set the passing score. However, this process is not without limitations, as there is always room for error in real-world applications. To better understand your performance on the PANCE, you can review your subscores and the standard error of measurement (SEM) for each content area. The SEM indicates the potential discrepancy between your numerical test score and your actual competency as a PA. While it's ideal to have a perfect test, there is always some degree of error involved. Instead of solely focusing on passing the exam, aim to understand and learn about the topics being tested. By doing so, you can improve not only your knowledge but also your ability to apply it in real-world situations. Given article text here The PANCE Passing Score To pass the Physician Assistant National Certifying Examination (PANCE), an examinee must reach or exceed a score of 350, which is set via standard setting. This process involves panelists reviewing test questions and deciding whether someone who is "just qualified" would be able to answer correctly. The final recommendation goes to the NCCPA Board of Directors for consideration and approval. PANCE Reference Group First-time takers are grouped together to provide a sense of comparison with peers. Using past two years ensures large sample sizes at all ability levels. Performance on PANCE is reported on a scale-score metric, placing scores on a unified scale regardless of test form difficulty. The passing score is 350, and the SEM does not affect pass/fail decisions. PANCE Test Standardization NCCPA builds tests to be equivalent in content blueprint, tasks, response time, and difficulty through Automated Test Assembly (ATA). The content blueprint for the Physician Assistant National Certifying Examination (PANCE) outlines the specifications for test questions, ensuring that all forms are equal in difficulty and completion time. Two independent committees of PAs review each test form to verify the relevance and accuracy of the content, removing outdated questions and replacing them with new ones that cover similar material. The test forms undergo a final check to ensure statistical features have not changed before approval. The blueprint is based on a practice analysis conducted in 2015, which analyzed diseases, disorders, and skills encountered by PAs in practice. This blueprint was implemented in 2019 and provides information on the relative proportion of questions from each content category and task area. The PANCE also provides subscores for content areas, giving examinees insight into their strengths and weaknesses. These subscores are estimated using augmented scoring, which considers relationships between content areas to provide reliable estimates. However, subscores should be interpreted with caution due to the limited number of questions in smaller content areas. The PANCE is a crucial exam for aspiring PAs, and excelling on it is essential for obtaining the PA-C credential. The exam is scored on a scale of 200 to 800, with a passing score of 350, which can be met or exceeded. This standard is determined through standard setting, a process that ensures the exam is fair and accurate. PA certification exam PANCE reviewed by panel of PA experts, scoring system determines passing score approved by NCCPA Board of Directors. The test consists of 300 multiple-choice questions divided into five blocks, with no penalties for incorrect or skipped answers. Your score is based on the number of correct answers. You'll have a total of 5 hours to complete the test, including breaks. Proper time management and test-taking strategies are crucial to ensure ample time for each section without feeling rushed. A good PANCE score reflects your knowledge, competence, and readiness to practice as a PA. While any score above 350 is considered passing, a score above 400 is regarded as excellent. The pass rate for first-time test-takers has historically been high, with recent results showing a 92% pass rate for first-timers in 2022. You can retake the exam if you fail, but you'll lose eligibility after six attempts or six years since graduation. Picmonic PA plan offers valuable study tools to help you succeed, including memorable studying through picture mnemonics and built-in quizzing, as well as need-to-know PANCE facts, unlimited quizzing, and helpful resources like study guides and webinars. Medical mnemonics and helpful articles are available to help you prepare for the PANCE. The article "How to Study for the PANCE" is a great place to start. With Picmonic, you'll have a personalized dashboard with customized study recommendations to aid your preparation. Additionally, the company's pass guarantee ensures that you can pass the exam on your first try and begin your PA career as quickly as possible. To sign up for Picmonic, visit their website now. Passing the Physician Assistant National Certifying Examination (PANCE) is based on a panel review process where content experts evaluate test questions and determine a predicted difficulty level for each question. The ratings are then combined to set a minimum passing score of 350 out of 700. To understand your performance, you can compare your scores to those of peers who took the exam for the first time over the previous two years. Your results also include a standard error of measurement (SEM), which indicates how well you performed on the test and how likely you are to achieve similar scores if you take it again. The test also provides subscores in various content areas, such as cardiovascular or pulmonary medicine, where you can see how well you did compared to others who took the exam for the first time.