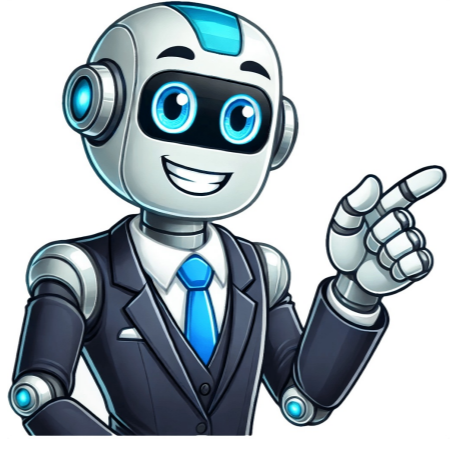


Continue









## Jeep compass overland 2025

Share — copy and redistribute the material in any medium or format for any purpose, even commercially. Adapt — remix, transform, and build upon the material for any purpose, even commercially. The licensor cannot revoke these freedoms as long as you follow the license terms. Attribution — You must give appropriate credit , provide a link to the license, and indicate if changes were made . You may do so in any reasonable manner, but not in any way that suggests the licensor endorses you or your use. ShareAlike — If you remix, transform, or build upon the material, you must distribute your contributions under the same license as the original. No additional restrictions — You may not apply legal terms or technological measures that legally restrict others from doing anything the license permits. You do not have to comply with the license for elements of the material in the public domain or where your use is permitted by an applicable exception or limitation . No warranties are given. The license may not give you all of the permissions necessary for your intended use. For example, other rights such as publicity, privacy, or moral rights may limit how you use the material. Designed for adventure in every direction, the new Compass stays true to the Jeep DNA by offering legendary capability, robustness, cutting-edge technology and unparalleled versatility. Debuted in Italy and manufactured at the Melfi plant, a key hub for Stellantis' electrification strategy, the new Compass evolves with an expanded engine range, which includes three powertrain options: e-Hybrid, e-Hybrid plug-in and full electric with up to 650 km range, the last also offering the four-wheel drive. The new Compass design has been meticulously crafted to deliver both enhanced performance and iconic style. The next-Jeep Compass stays true to the brand's storied legacy with features such as the unmistakable seven slot grille, trapezoidal wheel arches, and rugged cladding that's thoughtfully integrated to honor the brand's heritage while ensuring the vehicle retains its off-road prowess and signature look. Crafted for outdoor adventures yet perfectly suitable for daily use, the legendary capability is extended across the range, including the front-wheel drive version, which will be also 100% capable. Built upon the cutting-edge Stellantis STLA Medium platform, tuned to offer a space efficient formula with 4.55m total length, the New Compass is one of the most compact vehicles manufactured from the platform while delivering 55 mm of additional legroom. The next-generation Compass offers more space with an increased 34-liter front interior storage compartment, and an increased boot capacity by 45 liters, reaching up to 550L. Standard on the entire line-up, the new infotainment system offers a 10" cluster and a 16" radio, while connected services ensure that the vehicle will be always up-to-date receiving over-the-air (OTA) updates throughout the lifecycle, and Level 2 autonomous driving will support customers on a safe journey. The new Compass First Edition is now available for order with a choice of 2 powertrains: e-Hybrid and BEV (74 kWh 213hp Front Wheel Drive). It will be equipped with up to 20-inch wheels, LED matrix lights, 16-inch Navigation system, Level 2 autonomous drive, 360° all-round protection, and hands-free power tailgate. Follow the unveiling of the New Jeep Compass at the exclusive press conference on May 6th at 00:01 CET, streamed on the Jeep Europe YouTube channel New Jeep Compass Press Conference (YouTube) The Jeep® brand introduces the latest evolution of its successful Compass, a C-SUV that has captivated over 2.5 million customers worldwide since its debut in 2006. The new Compass is set to redefine expectations in the most competitive passenger car segment, which accounts for almost a quarter of the total European market. Built to embody the Jeep brand's hallmark capability, ruggedness, and distinctive attitude, the new Compass blends versatility with state-of-the-art technology. The brand's most globally available model, productions and sales begin in Europe, before expanding to other markets from there. Production remains in the heart of Italy at the Melfi plant, reinforcing Jeep's commitment to localized European manufacturing. Recognized for its cutting-edge automation and sustainability-focused operations, Melfi plays a strategic role in Stellantis' electrification roadmap. The Jeep brand's ambitious vision is reflected in its strong growth trajectory. In 2024, the brand sold 132,000 units across Europe—led by the success of the Avenger, which accounted for almost 80,000 units. Jeep's market presence continues to strengthen, with notable gains beyond Italy, where sales across the rest of Europe surged by nearly 10 percentage points in 2024 with the UK market tripling sales and key markets such as France and the Netherlands multiplying sales by 1.5 against 2023. The first months of 2025 confirm this positive trend with a market share of 1.1%. Fabio Catone, Head of Jeep Brand in Enlarged Europe, remarked: " The new Jeep Compass boldly represents the brand's forward-thinking philosophy, highlighting our dedication to not only meeting today's market demands but also anticipating tomorrow's opportunities. This vehicle is the perfect expression of the Jeep ruggedness and performance, delivering state-of-the-art solutions while preserving our commitment to electrification and sustainability. Crafted for outdoor adventures yet perfect for everyday use, the new Jeep Compass stands as a powerful testament to our relentless pursuit of innovation and versatility, designed to meet the diverse needs of customers around the world". Design, Technology, and Capability—The Jeep Way The new Jeep Compass stands as a bold and unmistakable statement, showcasing a design that captures the essence of the Jeep brand's legendary heritage while embracing modern innovation. Built upon the cutting-edge Stellantis STLA Medium platform, specifically tailored to support electrification in the C and D segments, this forward-thinking platform guarantees an exceptional range, rapid charging capabilities, optimal efficiency, and high performance without compromising on affordability. Crafted by the Jeep brand's dedicated engineering teams in Turin and the United States, with input from expert technical minds around the world, the new Compass strikes an impressive balance between rugged off-road capability and seamless daily usability. Perfectly suited for outdoor adventures yet equally adept at navigating urban environments, this vehicle offers unmatched versatility, advanced technology, and a heightened level of safety. Its design has been meticulously crafted to deliver both enhanced performance and iconic style. True to the Jeep brand's legacy, the Iconic Jeep features such as the unmistakable seven-slot grille, trapezoidal wheel arches, and rugged cladding were thoughtfully integrated to honor the brand's heritage while ensuring the vehicle retains its off-road prowess and signature look. The new Jeep Compass has also been engineered with functionality and safety in mind; the addition of the Anti-scratch modular Jeep shield and reinforced bumpers provides enhanced protection for both urban and off-road environments. Additionally, to ensure optimal protection, the vehicle's radar has been repositioned to avoid damage in tight spaces or when encountering obstacles. New Compass is available in six colors that are linked to specific natural landscapes and can evoke emotions and particular images associated with each geographical region. The launch color will be Hawaii, a bright brilliant green inspired by the nuances of the tropical islands, the range varies from the Pacific (blue) to represent the vast expanses of the Pacific Ocean; the Antarctica (white) to symbolize the ice and snow of the far south of the planet; the Amazonia (brownish green) evoking the Amazon rainforest; the Yosemite (grey) emblematic of the towering cliffs and rock formations of the national park and Vulcano (black) calling to mind the isle of Vulcano in Sicily. The capability of the new Compass is extended across the range, including the front-wheel-drive version, which will also be 100% capable. With a ground clearance of up to 200 mm, approach angle of 20°, breakover angle of 15° and departure angle of 26° the new Compass is equipped to handle tough terrains with ease. Additionally, the vehicle's water fording depth of up to 470 mm highlights its ability to tackle the most challenging environments. Select terrain will be standard on all versions to support our customers in the most challenging situation as it will be the 360-degree protection already present on the Avenger. New suspension tuning with dedicated springs, dampers and antiroll bar are granting a good compromise between handling and comfort. And the all-wheel-drive versions will be even more capable thanks to special extra-functional design that ensures 27 degrees of approach angle, 16 degrees of breakover, 31 degrees of departure angle, and improved ground clearance and water fording. Hill descent control will be standard on the all-wheel drive versions. Beyond its off-road prowess, the Compass offers more interior space and remarkable versatility while remaining one of the most compact vehicles manufactured from STLA Medium Platform with only 4.55m total length. It now provides 55 mm of additional legroom, a larger 34-liter front interior storage compartment, and an increased boot capacity of 45 liters, reaching up to 550L. The 40/20/40 rear seat split, standard on all versions, allows for ultimate flexibility, making it as functional for passengers as it is for cargo. In the realm of technology, the new Compass is an all-inclusive value proposition. The new infotainment system offers a 10" cluster and a 16" radio, while connected services ensure that the vehicle will be always up-to-date, receiving over-the-air (OTA) updates throughout the lifecycle, and Level 2 autonomous driving will support our customers on a safe journey on longer trips or in congested urban areas. All this will be standard on the entire line-up. And the experience can be even improved with head-up display, Semi-automatic lane change, Matrix LED and Mobile Phone access. Novelities on Compass and forward-looking features, some of which are normally only available in the premium segments. A Powertrain for Every Need With a full range of powertrains covering widely the segment, the new Compass will further enhance the freedom of choice Jeep offers to its customers with a 145 HP 48V Hybrid, a 195 HP Hybrid Plug-in and 3 BEV versions, ranging from 213hp in the front-wheel drive version up to stunning 375hp in the all-wheel drive. To achieve this impressive 375 HP, Jeep introduced on the platform, exclusively for the brand, a new dedicated and more powerful rear electric motor that provides an additional 49 kW of peak power and up to 232 Nm torque. Coupling this with a 14:1 rear reducer, it translates into an impressive 3100Nm available at the rear wheels. This gives maximum traction in most challenging situations, with the ability to climb a 20% slope, even with zero traction on the front wheels. EV Charging is also up to the higher standard with a rapid 160kW DC solution offering a 30 minute 20-80% recharging time, and an onboard charger with up to 22kW. The BEV range up to 650km is another key attribute of powertrain offering, positioning the new Jeep Compass to be highly competitive even in the advanced stages of electrifications with an improved aerodynamic efficiency and without compromising the practicality and spaciousness of the vehicle. The CX has been improved by 10%, achieving a value of less than 0.3, introducing elements like: Active Grill Shutter directly integrated int the front bumper, Air duct on front and rear wheels, Sharp rear edges and a fully flat underbody design. First Edition Introducing the First Edition of the new Jeep Compass—a unique, limited-time special offer designed for a bold market entry. From the outset, customers can choose between two powertrains: a 48V e-Hybrid with 145 hp or a BEV variant with 213 hp. The BEV version marks the debut of this technology on the Jeep Compass, featuring front-wheel drive and a range of 500 km. The First Edition encapsulates the key pillars of the New Compass's development. It boasts distinctive features such as up to 20-inch wheels, LED matrix headlights, all while maintaining the unmistakable boxy Jeep design. Its capability shines through with optimized off-road angles and the Select Terrain system, complemented by a 360° protective material that shields the lower vehicle from scratches—whether in the city or on adventurous outings. Comfort is prioritized with standard cloth & vinyl ventilated seats with 6-way manual adjustment and 2-way driver lumbar adjustment. Safety is another cornerstone of the New Compass, showcased in the First Edition with Level 2 autonomous driving capabilities, front and rear parking sensors, and a rear parking camera. The offer also includes a streamlined optional package featuring amenities like ventilated and massaging seats, an open-air sunroof, and semi-automated lane change assistance. The First Edition is available to order now, with deliveries set to begin in Q4 2025. Follow the unveiling of the New Jeep Compass at the exclusive press conference on May 6th at 00:01 CET, streamed on the Jeep Europe YouTube channel New Jeep Compass Press Conference (YouTube) Jeep Brand For more than 80 years, Jeep® has been the global leader in SUVs, delivering legendary off-road capability, advanced technology and exceptional versatility for those who seek adventure. With a commitment to innovation, Jeep offers a diverse lineup of vehicles powered by internal combustion engines, hybrid technology and all-electric drivetrains. The Jeep brand's dedication to customer satisfaction is reflected in Jeep Wave, a premium owner loyalty and customer care program that provides exclusive benefits and 24/7 support. Built on a heritage of freedom, adventure, authenticity and passion, Jeep continues to set the standard for rugged, yet refined vehicles designed to conquer it all. Turin, 6 May, 2025 The imminent launch of the 2025 Jeep Compass marks a significant moment for the American brand in the competitive SUV segment. Ending the era of the 2-liter turbo-diesel engine, the Compass introduces a new engine derived from the Ram Rampage in the Longitude, Overland, and Blackhawk versions. This transition reflects a push towards more efficient and environmentally friendly engines, a growing trend in the global automotive market. The new 2025 Compass will offer the 1.3-liter T 270 turbo flex engine in the Sport, Longitude, S, and Limited trims, capable of delivering a power of 180 hp with gasoline and 185 hp with ethanol, demonstrating Stellantis brand's adaptability to the diverse needs of the Brazilian market. This engine is paired with a 6-speed automatic transmission, but there's speculation about a possible combination of 4x4 traction and a 9-speed automatic transmission, as already seen in the Renegade. A revolutionary aspect of the new version is the introduction of the Bio-Hybrid e-DCT technology, placing the American manufacturer at the forefront of the hybrid SUV sector. This technology, which uses two electric powertrains with a voltage between 12V and 48V, allows the vehicle to operate in fully electric mode or combination with the internal combustion engine, offering a significant increase in both power and torque. Looking ahead to 2026, the arrival of the new generation of the Jeep Compass is expected, based on Stellantis' STLA Medium platform. This platform change suggests a significant evolution in performance and features of the Sport Utility Vehicle, keeping the current Compass in line and positioning the new model between the current generation and the Commander. The 2025 Jeep Compass represents a significant turning point for the American manufacturer in the SUV market, combining advanced technologies and innovative design to meet the growing demands of an audience increasingly focused on energy efficiency and environmental sustainability. With its new features and characteristics, the Jeep Compass is ready to redefine the standards of its segment in the Brazilian market and reaffirm the brand's position as a leader in the industry. Follow us on The Motorsport Images Collections captures events from 1895 to today's most recent coverage.Discover The CollectionCurated, compelling, and worth your time. Explore our latest gallery of Editors' Picks.Browse Editors' FavoritesExperience AI-Powered CreativityThe Motorsport Images Collections captures events from 1895 to today's most recent coverage.Discover The CollectionCurated, compelling, and worth your time. Explore our latest gallery of Editors' Picks.Browse Editors' FavoritesExperience AI-Powered CreativityThe Motorsport Images Collections captures events from 1895 to today's most recent coverage.Discover The CollectionCurated, compelling, and worth your time. Explore our latest gallery of Editors' Picks.Browse Editors' FavoritesExperience AI-Powered Creativity Jeep Compass é líder soberano de um segmento de modelos médios bem competitivos. Tem inúmeras versões que na linha 2025 ganhou o reforço dos modelos Overland e Blackhawk equipados com motor 2.0 Hurricane 4 já usado na Ram Rampage de 272cv e 40kgfm de torque com tração integral 4x4 e câmbio automático de nove marchas. São versões bem mais caras, mas com desempenho superior com quase 100cv a mais que a 1.3.Desta vez, o R7-Autos Carros testou a versão Overland, que é a mais em conta equipada com esse motor.A versão Overland traz uma nomenclatura já usada no Commander. É uma visão tradicional do SUV médio. Pouca gente vai reparar que há uma grade nova, além de novas rodas e detalhes tradicionais como frisos e itens cromados, teto na cor preta contrastante e dupla saída de escapamento, que é a novidade mais visível.Jeep Compass Overland: teste da versão 2025 (vale a compra?) Por dentro, o Compass traz o mesmo visual de painel e bom acabamento que estreou em 2021. Nesta versão, destaca-se a multimídia de 10 polegadas, o acabamento em veludo no centro do painel e o cluster digital, itens já esperados em uma versão próxima do topo de linha.Jeep Compass Overland: teste da versão 2025 (vale a compra?) A versão Overland fica bem distante em preço da Limited, que custa R\$ 236 mil, saindo por R\$ 266 mil. Esta versão já vem com itens de segurança ativa atualizados, como controle de cruzeiro adaptativo, detecção de tráfego traseiro, monitor de ponto cego, sensor de estacionamento dianteiro, forro de teto preto e teto solar panorâmico. Ainda no quesito segurança, conta com airbags para os joelhos.Jeep Compass Overland: teste da versão 2025 (vale a compra?) O diferencial da Overland está principalmente no motor. Entra em cena o 2.0 turbo Hurricane 4, que tem 272 cv, 40 kgfm de torque e, junto com o câmbio automático de nove marchas e tração 4x4 sob demanda, traz uma nova percepção ao volante.Jeep Compass Overland: teste da versão 2025 (vale a compra?) O motor Hurricane tem rendimento alto em todas as faixas de rotação, com trocas suaves e, se necessário, uma atuação firme da tração integral. Surpreende a aceleração, que pode superar os 220 km/h, com 0-100 km/h na faixa dos 6 segundos.Jeep Compass Overland: teste da versão 2025 (vale a compra?) Fora da estrada, há os “modos off-road” que ajudam a compensar a falta de tração em alguns terrenos, com o sistema eletrônico funcionando de forma automática.Jeep Compass Overland: teste da versão 2025 (vale a compra?) No sistema multimídia de 10 polegadas, o Jeep Compass Overland ganha Adventure Intelligence Plus e Alexa nativa para comandos de voz e interação com comandos a bordo, além de Wi-Fi nativo.Jeep Compass Overland: teste da versão 2025 (vale a compra?) Como comodidade, o Compass Overland traz partida remota, banco do motorista com ajuste elétrico, carregador de celular por indução e retrovisor interno eletrocromico. Ao acionar o alarme e travamento por controle, os retrovisores rebatem eletricamente.Jeep Compass Overland: teste da versão 2025 (vale a compra?) Fora isso, o Compass Overland mantém suas dimensões: 4.404 mm de comprimento, 1.819 mm de largura, 1.632 mm de altura e 2.636 mm de entre-eixos, com porta-malas de 410 litros. Não houve alteração nas dimensões, mas a versão com motor 2.0 Hurricane pesa 1.720 kg, mais do que as versões 1.3 turbo T270, que pesam 1.589 kg.Jeep Compass Overland: teste da versão 2025 (vale a compra?) Dentro de uma proposta de desempenho e boa oferta de itens de série, sem dúvida, o Compass não deve nada a nenhum concorrente. Nem em desempenho, nem em itens de série, mas claro que nem todo perfil de cliente que acelerar um carro com 272 cv, cerca de 100 cv a mais que as versões 1.3, e também mais forte que os rivais diretos, o que cobra o seu preço.Na linha 2025, a Jeep trouxe algumas novidades importantes para o Compass. Entre elas, uma atualização nos sistemas ativos de segurança, mantendo seus itens de série. Embora ainda não ofereça eletrificação, agora o Compass tem cinco anos de garantia de fábrica. O Jeep Compass Overland 2.0 Hurricane 4 4x4 custa R\$ 266,9 mil.Os textos aqui publicados não refletem necessariamente a opinião do Grupo Record.