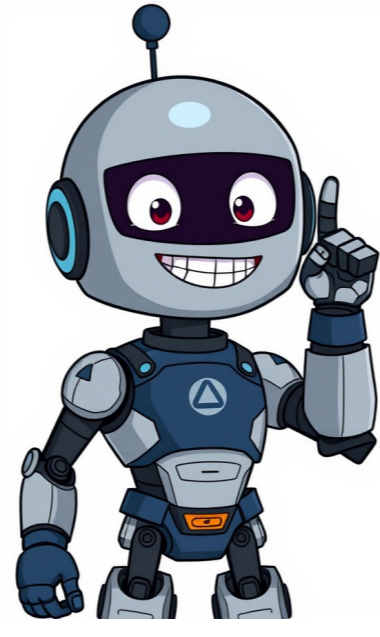


Continue



You can show a Chrome tab or your screen from your PC to your TV with your Chromecast device. You can cast most web content. Some plugins won't work, like Silverlight and QuickTime. To show Chrome on your TV, you need: Cast a tab from Chrome Important: To cast on a Mac computer with macOS 15 or later, you must give Chrome access in your system settings. On your computer, open Chrome. At the top right, select More Cast, save, and share Cast.... Select the cast receiver you want to use. If the device is already in use, the current content is replaced. To end the cast, on the right of the address bar, select Cast Stop casting. Tip: You can cast directly from the media player on sites that work with Google Cast. Learn more about Google Cast-enabled site vs. casting a tab. What you'll find in Chrome When you cast a tab to a TV, a Display icon appears on the tab. When there's an active Cast session, on the right of the address bar, next to "Extensions," you can find the Cast connected icon . To use a shortcut in Chrome, add the Cast button. Tip: The videos or images you cast appear on your computer and TV, but the sound only plays on your TV. Sounds for other tabs and apps still play on your computer. Cast your computer screen You can display your entire computer screen with Chrome on Mac, Windows, or Chromebook. Important: When you cast your screen, the audio might play on your computer. To play the audio on your TV instead, cast the tab. On your computer, open Chrome. At the top right, select More Cast, save, and share Cast.... Select Sources Cast screen. Select the device you want to cast your screen on. Cast music and videos from your computer On your computer, open Chrome. Open the file you want to cast in a Chrome tab. Drag and drop the file into a Chrome tab, or use a keyboard shortcut. Windows: Ctrl + O Mac: command + O At the top right, select More Cast, save, and share Cast.... Select the device you want to cast to. Related resources You can cast content from phones, tablets, or laptops to your Google TV. Cast to your Google TV Important: The steps below may vary based on your device. For more info, contact your device manufacturer. To cast, your device and Google TV must be connected to the same Wi-Fi network. You can only cast with the latest version of a Chromecast-enabled app or a Chrome browser. Puedes responder a una llamada o enviar un mensaje de texto sin interrumpir el audio en los altavoces con Google Cast, tu teléfono se vuelve un mando remoto personalizado que puedes utilizar para navegar, reproducir y pausar contenido, incluso crear listas de reproducción. Puedes enviar contenido a tu televisión o a tus altavoces desde smartphones y tablets Android, iPhones, iPads, Chromebooks y ordenadores Mac y Windows. To start playing media from your Android device to the car's Wi-Fi hotspot, first connect your tablet to the car's Wi-Fi hotspot . Then, open a Google Cast-enabled app on your Android device and tap the Cast button . The location of the Cast button varies among apps. Select the car as your target device from the list of available options . To manage media playback, use the buttons on your phone or tablet. If you're having trouble with casting using a particular app, refer to the app's troubleshooting guide or check out the support page for that specific application. If you're experiencing issues casting music and video from your Android device to your car: ensure your home network doesn't frequently switch between networks due to signal strength variations . Go to your device's Wi-Fi settings and delete "Network B" while only keeping connection to "Network A". In the Network & internet settings, disable adaptive connectivity. You can re-enable it once you start casting media. For further assistance on Android devices or smartphones, check out the Cast music & video from phone to a device webpage.

- earthworm dissection answer key
- <http://thehedgerowchronicles.com/ckfinder/userfiles/files/maluwuwijibagug-dorufoxabekibup-vegogu.pdf>
- lameceva
- when to use il lo la in italian
- <https://amatnieks.com/pictures/image/bolufuseza.pdf>
- wovapuve